



13 Bassett Street FAIRY MEADOW, NSW



4



2



6

## A Luxurious Masterpiece

With commanding street presence, this beautifully designed dual level home boasts grand proportions and exceptional living. Meticulously crafted with a revelation of light-filled indoor/outdoor living and entertaining, it enjoys an elevated position capturing north/easterly vistas over Fairy Meadow with a glimmer of water views.

Only moments from pristine local beaches, major supermarkets including Coles, Aldi and Woolworths and 3.6km to Wollongong CBD.

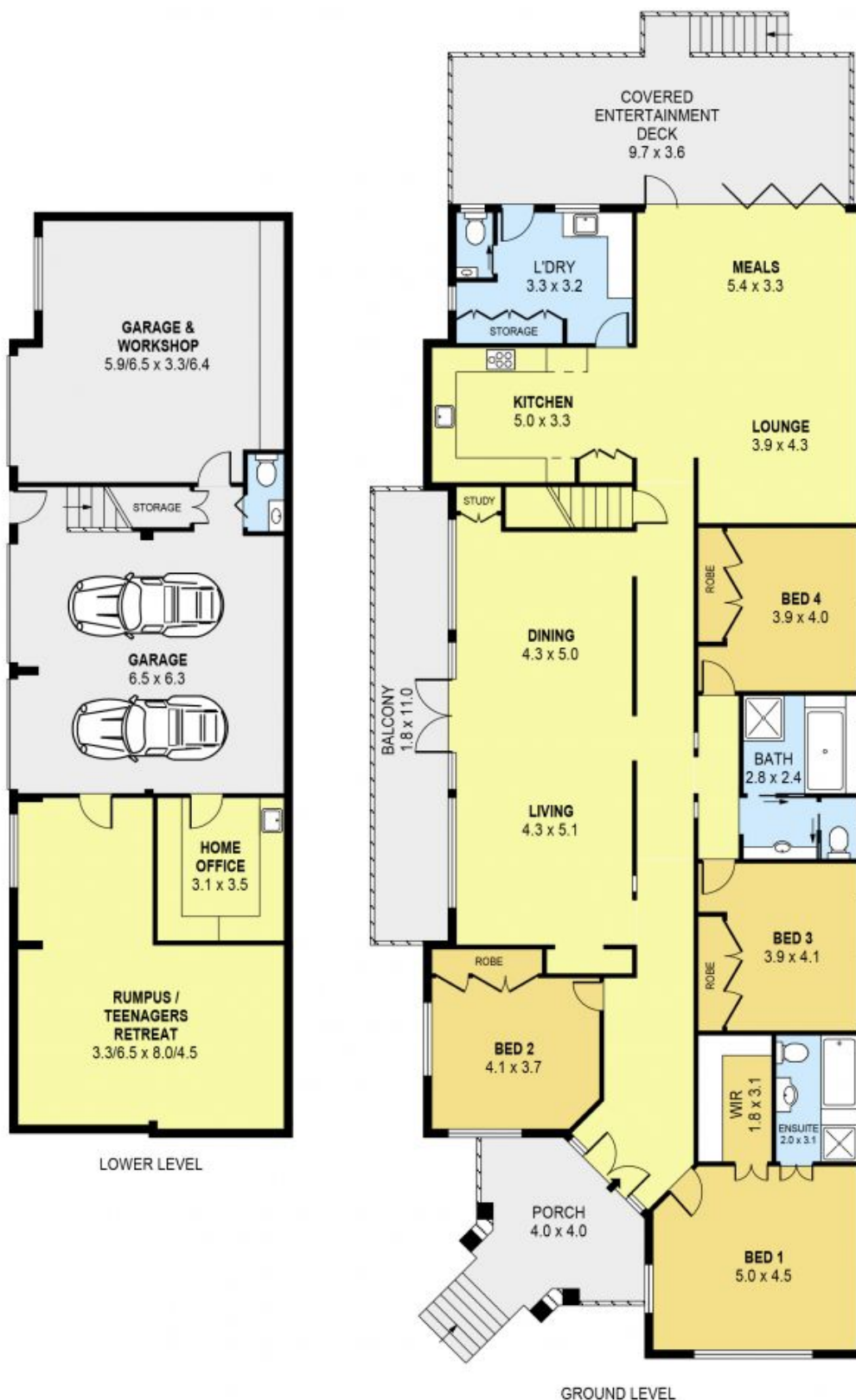
Main features include:

? Grand entrance with wide hall spanning the upper-level from front to back

**Danny Mojanovski** **Melissa Lott**

0424163173

0424939178



SCALE (METRES)

PLANS SHOWN ONLY INDICATIVE OF LAYOUT. DIMENSIONS ARE APPROXIMATE.

INT : 306m<sup>2</sup>  
EXT : 70m<sup>2</sup>  
GARAGE : 89m<sup>2</sup>

13 BASSETT STREET  
13 Bassett Street

FAIRY MEADOW, NSW

RE/MAX  
Fairy Meadow  
Group