



2/58 Elliotts Road FAIRY MEADOW, NSW



2



1



1

## Lifestyle & Convenience!

This modern two bedroom townhouse with spacious floor plan and Eastern aspect offers contemporary design and an ideal central location.

Convenience is assured with the property situated only moments to your choice of major grocery outlets, beaches, Railway, FREE shuttle bus, local restaurants and cafes. A wonderful opportunity for the individual, couple or family searching for convenience and the benefits of coastal living.

- Two bedrooms with built-in wardrobes and ceiling fans
- Generous bathroom with separate toilet
- Open plan living overlooking rear timber deck
- Kitchen with ample storage space and gas cooking
- Set in a boutique complex of four

**Council Rates:** \$1,628.80/year (approx)

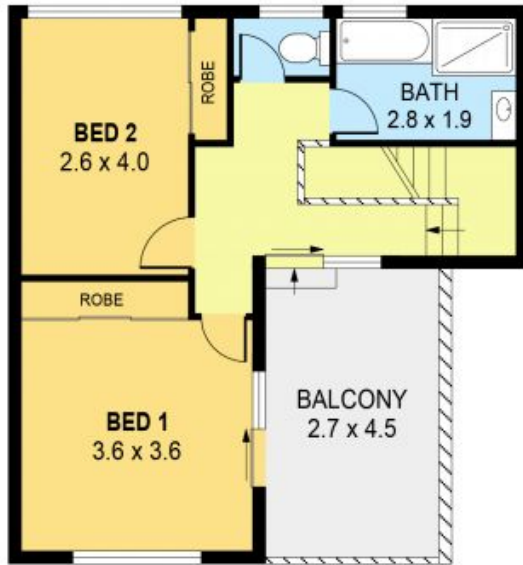
**Water Rates:** \$603.96/year (approx)

**Strata Rates:** \$590.00 p/q

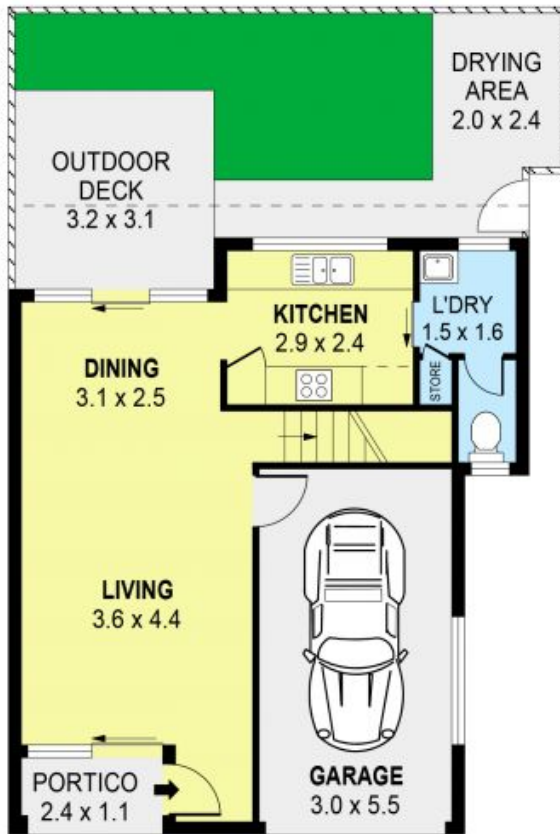
**Danny Mojanovski Melissa Lott**

0424163173

0424939178



UPPER LEVEL



GROUND LEVEL



PLANS SHOWN ONLY INDICATIVE OF LAYOUT. DIMENSIONS ARE APPROXIMATE.  
Ref. No. 96667

INT : 85m<sup>2</sup>  
EXT : 35m<sup>2</sup>  
GARAGE : 17m<sup>2</sup>

2/58 ELLIOTTS ROAD  
2/58 Elliotts Road

FAIRY MEADOW, NSW

