



22/124 Princes Highway FAIRY MEADOW, NSW



Beautiful Ocean Vistas and Convenience

Perfectly positioned with a delightful light-filled Eastern aspect, you will enjoy long days taking in the panoramic views this one bedroom, level 5 apartment has to offer.

Main features include:

- Generous secure entry with space to store items
- Light-filled living/dining with wide outlook to beautiful ocean vistas
- Stylish open kitchen with gas cooking and dishwasher
- True King size bedroom with built-in wardrobe
- Ultra spacious ensuite with shower
- Euro style laundry with cabinetry for plenty of storage
- Air conditioning and secure parking

Council Rates: \$1,304.84/year (approx)

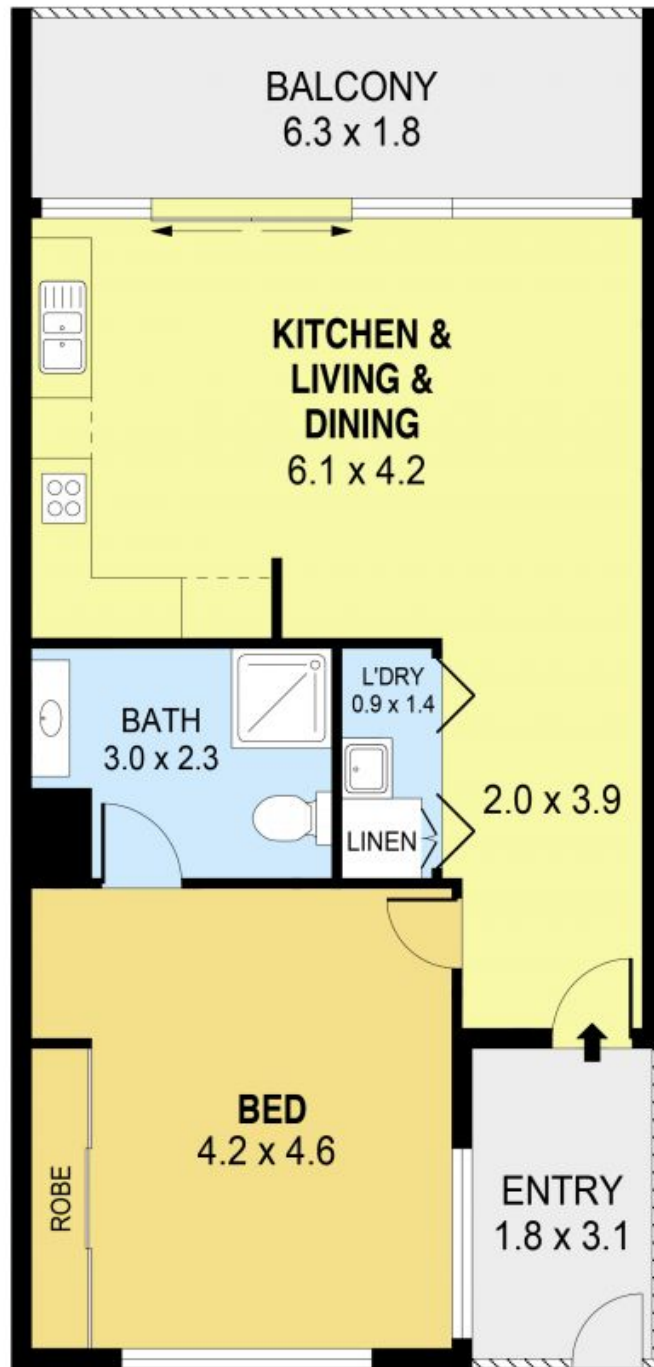
Water Rates: \$603.96/year (approx)

Strata Rates: \$3,481.20/year (approx)

Danny Mojanovski **Melissa Lott**

0424163173

0424939178



PLANS SHOWN ONLY INDICATIVE OF LAYOUT. DIMENSIONS ARE APPROXIMATE.
Ref. No: 94560

INT : 63m²
EXT : 17m²

UNIT 22, 124 PRINCES HIGHWAY
22/124 Princes Highway FAIRY MEADOW, NSW

