



6 Camden Grove FIGTREE, NSW



3



1



1

Ready for some Inspiration

Built in 1964 and nestled in one of Figtree's well established streets where properties seldom come available to the market, is this long-loved family home being offered to the market for the very first time by the original owners.

Perfect for inventors, first home buyers or renovators alike, this very tidy home spanning two levels is set on a tiered 556sqm parcel of land is move-in ready, or inject your own creative flare by working with the existing layout to create a plan to suit your level of style and comfort, giving this gem a fresh new personality.

The upper level offers:

- Separate tiled entry
- Home office/study or fourth bedroom

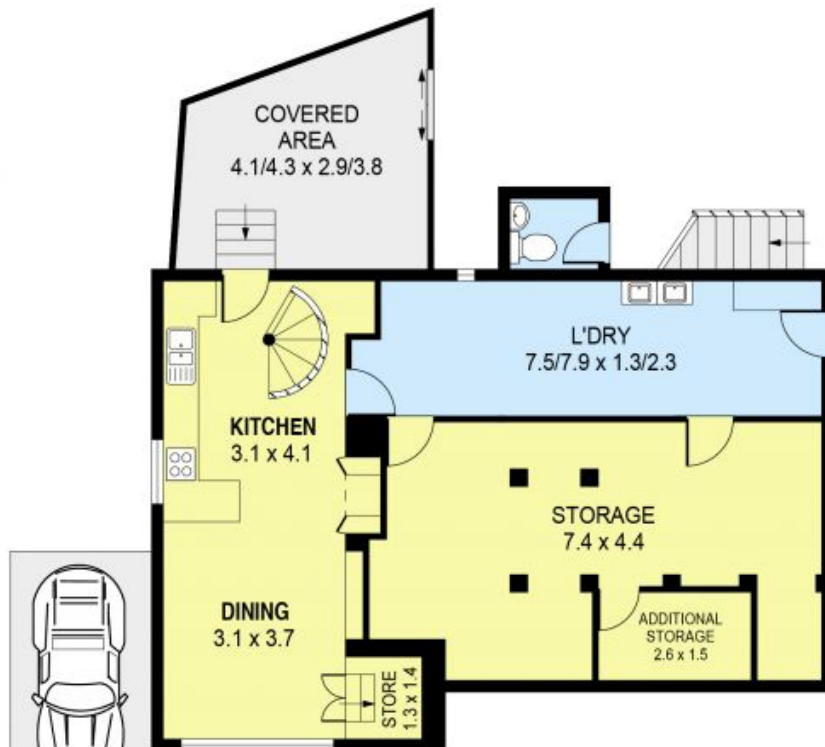
Danny Mojanovski **Melissa Lott**

0424163173

0242855555



GROUND LEVEL



LOWER LEVEL



PLANS SHOWN ONLY INDICATIVE OF LAYOUT. DIMENSIONS ARE APPROXIMATE.
Ref. No. 87303

6 CAMDEN GROVE
6 Camden Grove

FIGTREE, NSW

