



70 Hopewood Crescent FAIRY MEADOW, NSW



3



1



1

Live the peaceful lifestyle

Conveniently located within minutes to Fairy Meadow Shops, schools and Public transport this three bedroom home sitting on a 746m2 block features separate formal dining, living space, large kitchen and built-in wardrobes to all.

The backyard is fully fenced with lush gardens and a covered patio area, perfect for entertaining your family and friends.

Additional features include:

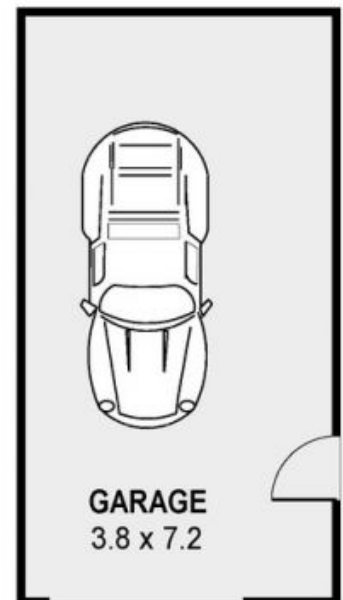
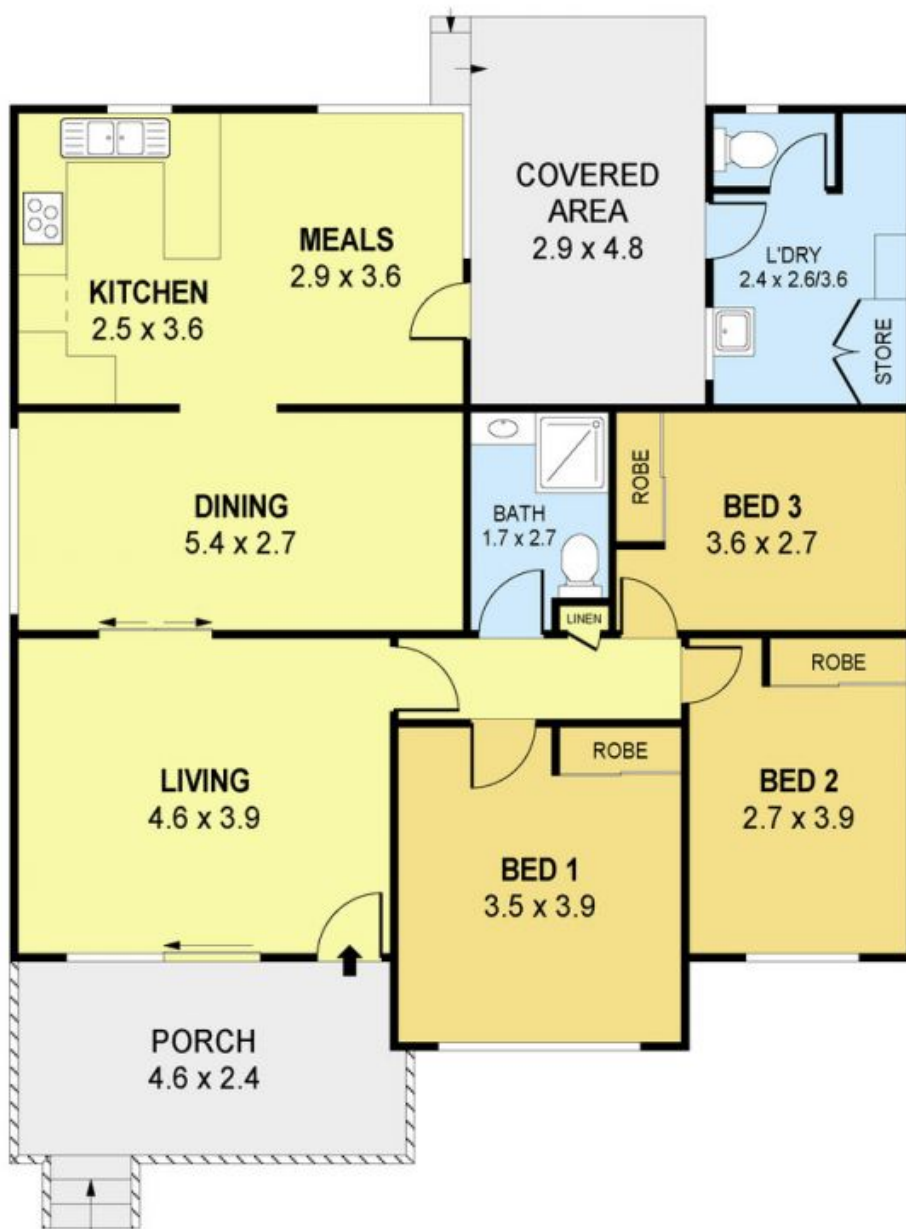
- Single garage
- High ceilings
- Ducted air conditioning
- External laundry accessible via the deck
- Great for young families and investors

Danny

0424 163 173
(LREA)

Mojano Sales Department

02 4285 5555



PLANS SHOWN ONLY INDICATIVE OF LAYOUT. DIMENSIONS ARE APPROXIMATE.
Ref. No. 67266

INT : 107m²
EXT : 25m²
GARAGE : 27m²

70 HOPEWOOD CRESCENT
70 Hopewood Crescent

FAIRY MEADOW, NSW

