



26 Norman Street FAIRY MEADOW, NSW



2



2



2

Location with Opportunity

Nestled in a highly desirable part of Fairy Meadow is this immaculate two bedroom home. Sitting on a level 645sqm block with an approx 15.3 metre frontage, this home provides you with the opportunity to add value to your purchase by either building your dream home, adding a second dwelling or developing (STCA).

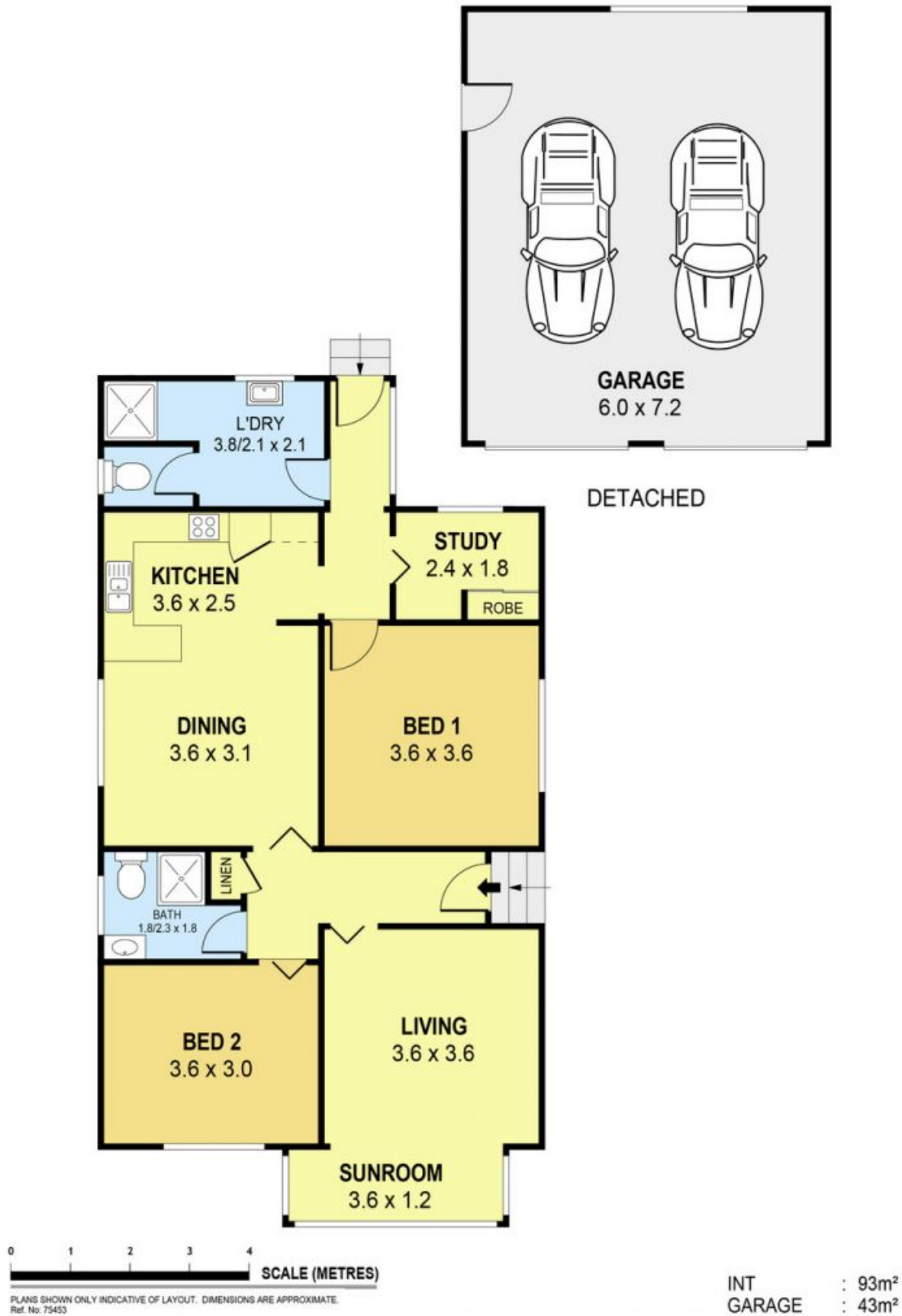
Located within walking distance to local schools, shopping, beaches, vibrant cafe's and restaurants, you will thoroughly enjoy the convenience.

- Two well proportioned bedrooms plus study
- Generous combined kitchen/dining
- Internal laundry with 2nd shower and toilet
- Double detached garage
- Sunny North facing rear yard

Danny

Mojanovski

0424 163 173
(LREA)



26 NORMAN STREET
26 Norman Street

FAIRY MEADOW, NSW

