



7/118-126 Princes Highway FAIRY MEADOW, NSW

 2  2  1

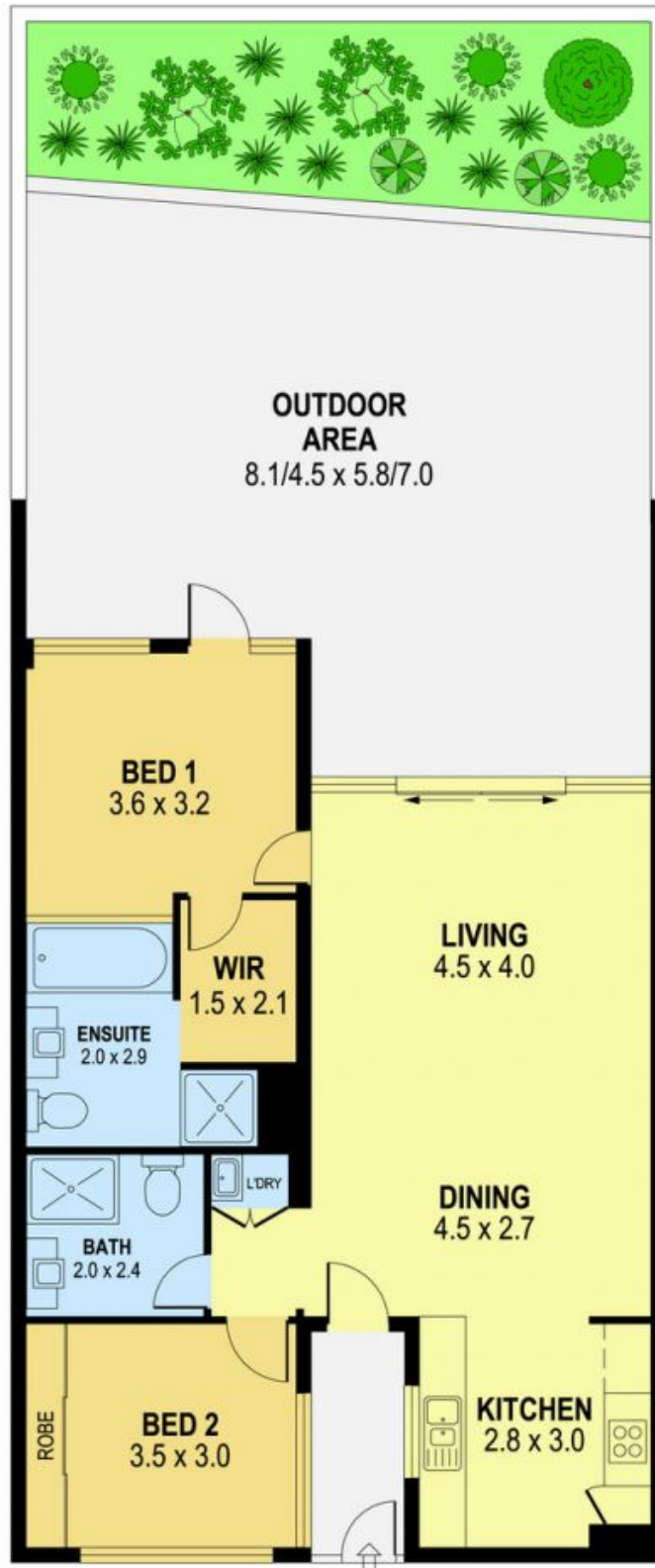
A Great Location Choice

Located within the popular 'Ambience' building, this stylish apartment presents a lifestyle of modern comfort and exceptional convenience. Flaunting stylish interiors bathed in sunlight from a celebrated eastern aspect, it boasts inviting open plan living flowing effortlessly to the outdoors.

Footsteps from Fairy Meadow's vibrant shopping and cosmopolitan amenities including cafe's, restaurants and express buses to Wollongong CBD, and just a 1.9km stroll to Fairy Meadow beach, this is a fantastic offering in a highly sought after locale.

- A fresh neutral interior
- Bright and spacious open plan living and dining
- Second bedroom with built-in robe

Danny Mojanovski
 0424 163 173
(LREA)



PLANS SHOWN ONLY INDICATIVE OF LAYOUT. DIMENSIONS ARE APPROXIMATE.

UNIT 7, 118-124 PRINCES HIGHWAY, FAIRY MEADOW, NSW

