



11 McLean Avenue FAIRY MEADOW, NSW



3



2



3

The Renovation or Development Opportunity you've been waiting for!

If you've been waiting to find a property with the 'right feel' to make your own, this may well be it! This traditional three bedroom home with a long family history is being offered to the market for the very first time.

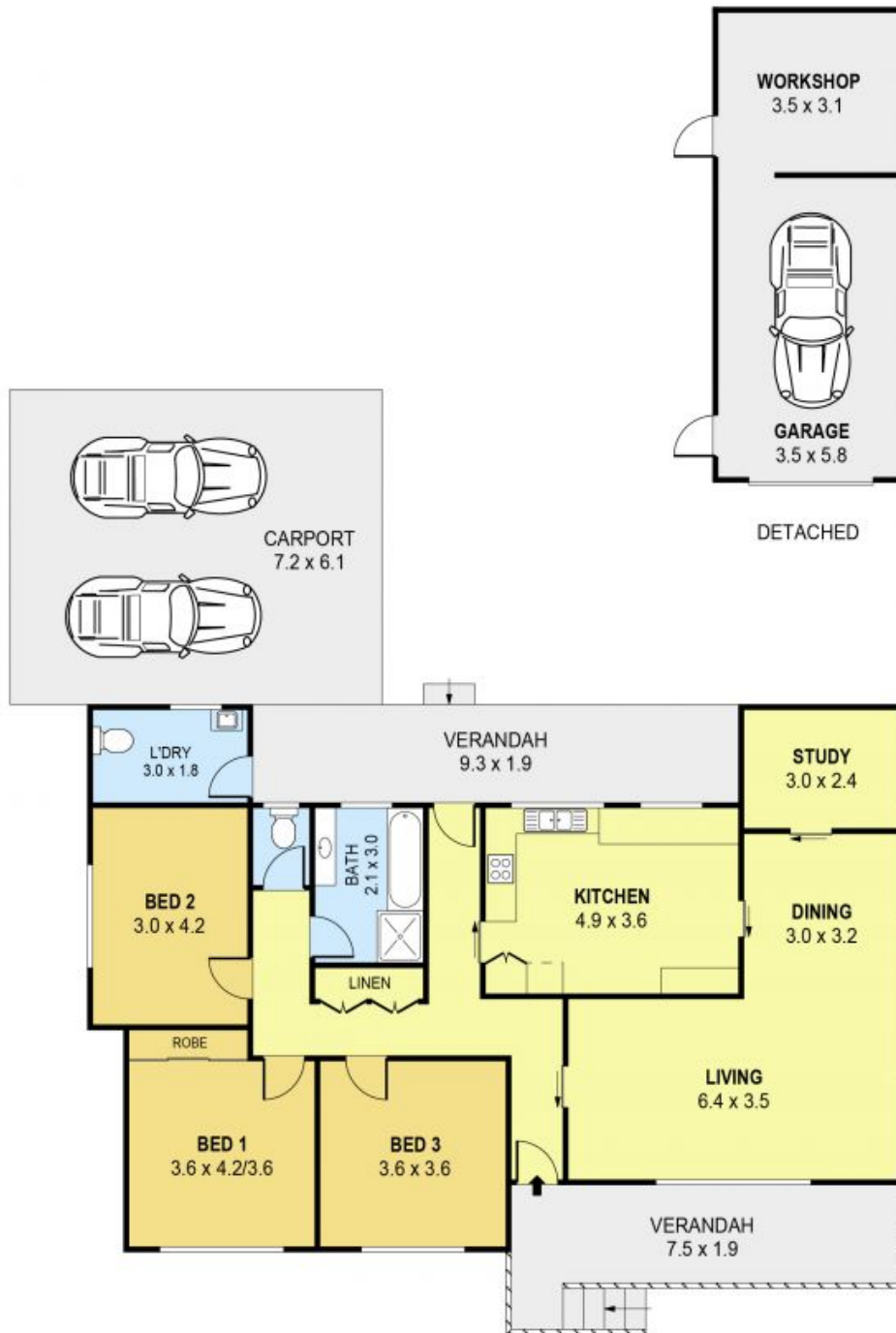
The large 1039sqm block has plenty of space for friends and family to enjoy. Simply sit and watch the kids run around whilst you enjoy the private peaceful surrounds.

- 1039sqm block of land with development opportunity (STCA)
- 9' Ceilings with ornate cornices throughout
- Generous living and dining area
- Study, or 4th bedroom

Danny

Mojanovski

0424 163 173
(LREA)



0 1 2 3 4 5 **SCALE (METRES)**

PLANS SHOWN ONLY INDICATIVE OF LAYOUT. DIMENSIONS ARE APPROXIMATE.
Ref. No. 74330

INT : 131m²
EXT : 33m²
GARAGE / WORKSHOP : 31m²
CARPORT : 44m²

11 MCLEAN AVENUE
11 McLean Avenue

FAIRY MEADOW, NSW

FAIRY MEADOW
Group