



2/8 Montague Street FAIRY MEADOW, NSW

 2  1  1

Location and Lifestyle!

This neat and tidy residence boasts simplicity and effortless living with split system air conditioning, stainless steel appliances and a sunny outdoor eating area while including an internal laundry with separate toilet. Positioned within a quiet complex the property is conveniently located within walking distance to public transport and only moments away from local schools, cafes and Fairy Meadow beach.

Council Rates: \$1,235.00/year (approx)

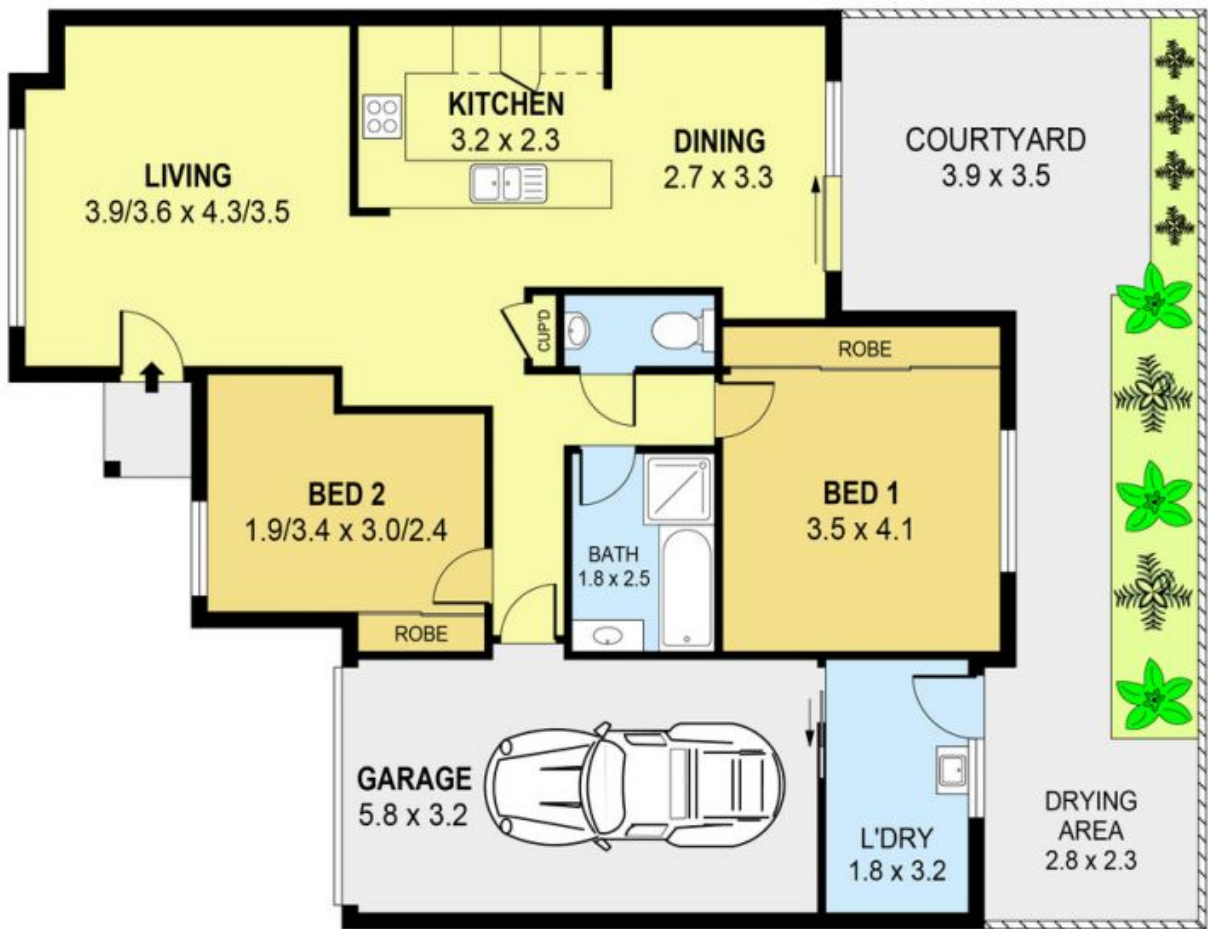
Water Rates: \$688.00/year (approx)

Strata Rates: \$1,830.00/year (approx)

- * Neat and tidy residence with split system air conditioning
- * Stainless steel appliances within the kitchen area
- * Quiet complex consisting of only four Villas
- * Close proximity to public transport and schools
- * Enjoy the convenience of Fairy Meadow living

Outgoings:

Danny Mojanovski
0424 163 173
(LREA)



0 1 2 3 4
SCALE (METRES)

PLANS SHOWN ONLY INDICATIVE OF LAYOUT. DIMENSIONS ARE APPROXIMATE.
 Ref. No. 57755

UNIT 2, 8 MONTAGUE STREET
2/8 Montague Street

FAIRY MEADOW, NSW

