



48 Lombard Avenue FAIRY MEADOW, NSW



4



2



1

Perfect for the growing family or savvy investor!

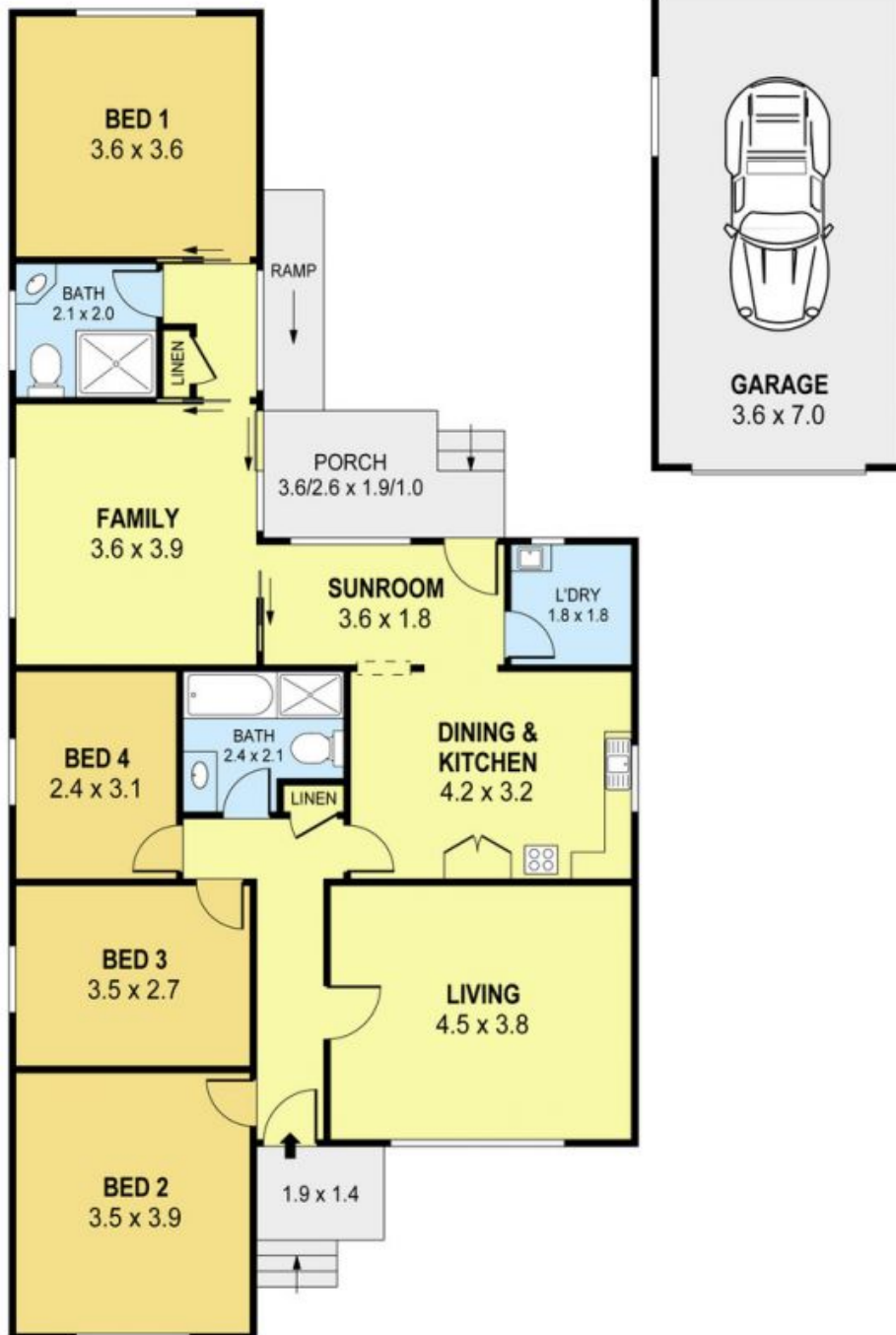
This property is being offered to the market for the first time by the original owners. Creating an excellent opportunity for a family in a tightly-held area, this home is set on a level 569sqm block and is located close to trendy shopping hubs and within a short distance to local beaches and Wollongong CBD.

- Renovate or rent out with possible dual income opportunity
- Light filled lounge with high ceilings
- Flexible family-friendly layout includes separate family room
- Generous original kitchen/dining with scope to renovate
- Four bedrooms, all with high ceilings and ceiling fans to two
- Original bathroom with classic original features plus ensuite
- Single detached colorbond garage and space for off street parking
- Potential to renovate, update and add personal touches
- Easy care yard

Danny

Mojanovski

0424 163 173
(LREA)



0 1 2 3 4 5
SCALE (METRES)

PLANS SHOWN ONLY INDICATIVE OF LAYOUT. DIMENSIONS ARE APPROXIMATE.
Ref. No. 55459

48 LOMBARD AVENUE
48 Lombard Avenue

FAIRY MEADOW, NSW

FAIRY MEADOW
Management
Group