



11 Guest Avenue FAIRY MEADOW, NSW



Lifestyle, Location and Potential Development!

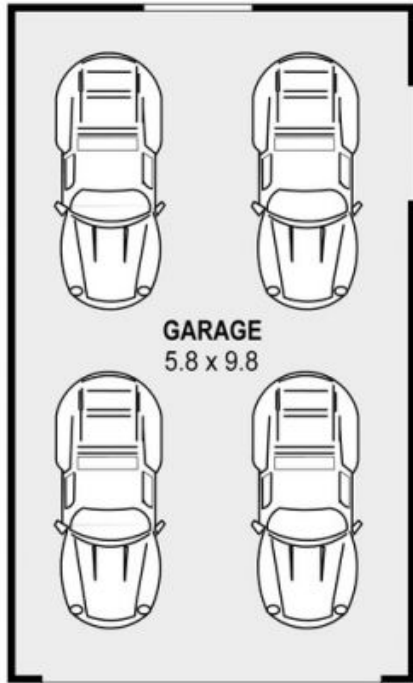
Conveniently positioned just steps from the local Fairy Meadow vibrant shopping district, this modest traditional home is situated on a 741sqm level block with potential to develop STCA. Only footsteps to cafes, restaurants, and schools with easy access to Wollongong's CBD and local beaches.

- Living room with air conditioning
- Original kitchen and adjoining dining
- Three bedrooms
- Spacious laundry with second bathroom
- Light filled sunroom overlooking the large rear yard
- Large double garage at the rear

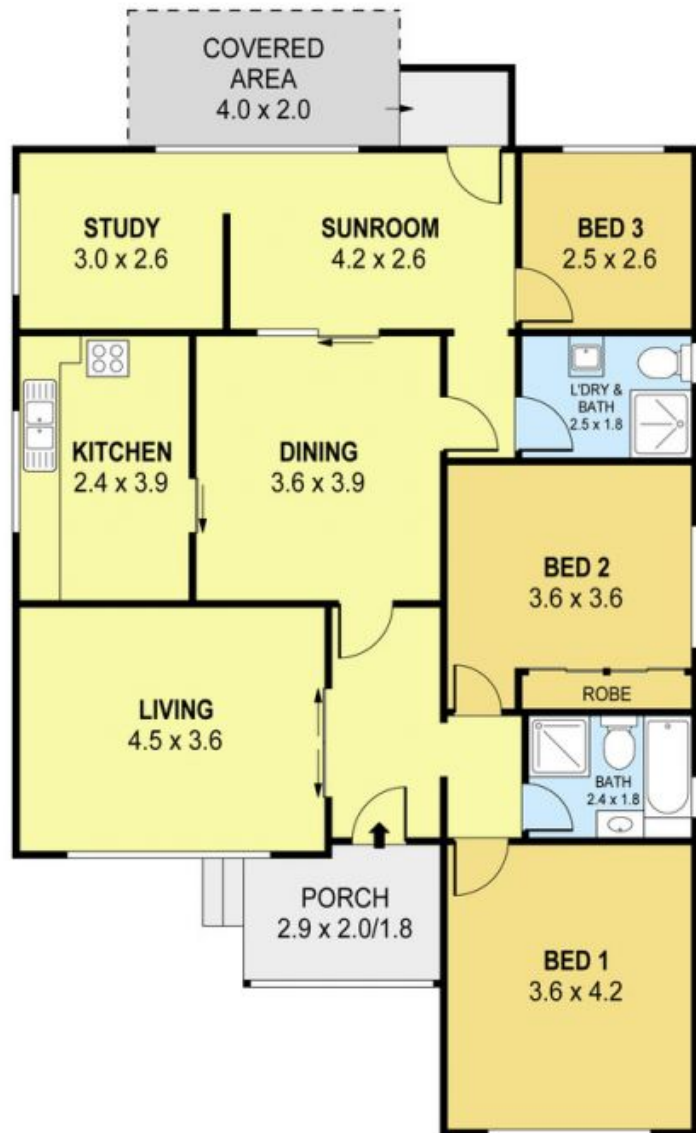
Danny

Mojanovski

0424 163 173
(LREA)



DETACHED



PLANS SHOWN ONLY INDICATIVE OF LAYOUT. DIMENSIONS ARE APPROXIMATE.
Ref. No. 55905

INT : 116m²
EXT : 16m²
GARAGE : 57m²

11 GUEST AVENUE
11 Guest Avenue

FAIRY MEADOW, NSW

