



68 Ramah Avenue MOUNT PLEASANT, NSW



4



2



2

Understated Elegance

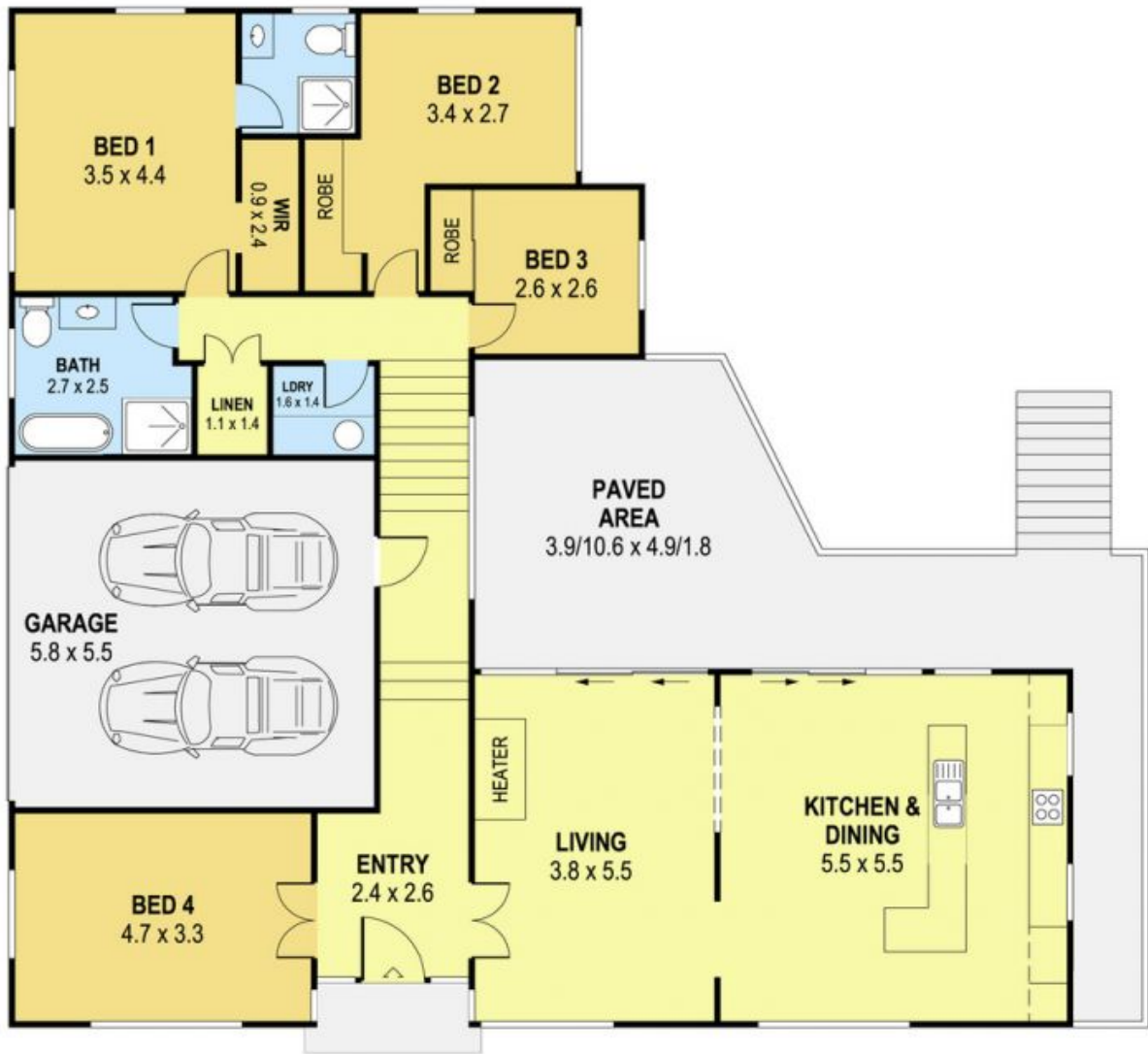
This beautifully appointed family home is located in one of the Illawarra's most desirable streets in Mount Pleasant. With quiet lush surrounds, this newly renovated property offers room for the family over dual levels. Featuring high raked ceilings, large picture windows, Tallowood timber floors, and an open plan gourmet kitchen. The sun drenched living and dining area flows out to an entertainer's balcony with a North facing rear yard.

- Air conditioning
- Bosch dishwasher, double oven and induction cook top
- Master bedroom with walk in wardrobe and ensuite
- Immaculate fully tiled bathroom with free standing bath
- Laundry
- Generous linen cupboard

Danny

0424 163 173
(LREA)

Mojana Džina Mojanovski



0 1 2 3 4 5 SCALE (METRES)

PLANS SHOWN ONLY INDICATIVE OF LAYOUT. DIMENSIONS ARE APPROXIMATE.

TOTAL AREA : 221m²

68 RAMAH AVENUE

MOUNT PLEASANT, NSW

Management
MOUNT PLEASANT