



10/41-43 Robertson Street CONISTON, NSW



2



1



1

## Lifestyle and Location

This immaculate townhouse is ideally located within a quiet leafy street, minutes to Wollongong's retail precinct, schools, and public transport. Offering an open plan living and dining area, a neat and tidy kitchen, internal laundry, single garage and a private sunlit courtyard. Upstairs you'll find two bedrooms with BIW's, bathroom with a separate toilet and a linen cupboard. Perfect for those seeking a low maintenance lifestyle with convenience at your fingertips.

\*Strata Levy \$405.15 qtr  
 \*Land Rates \$ 323.50 qtr  
 \*Water Rates \$182.95 qtr

**Council Rates:** \$1,294.00/year (approx)

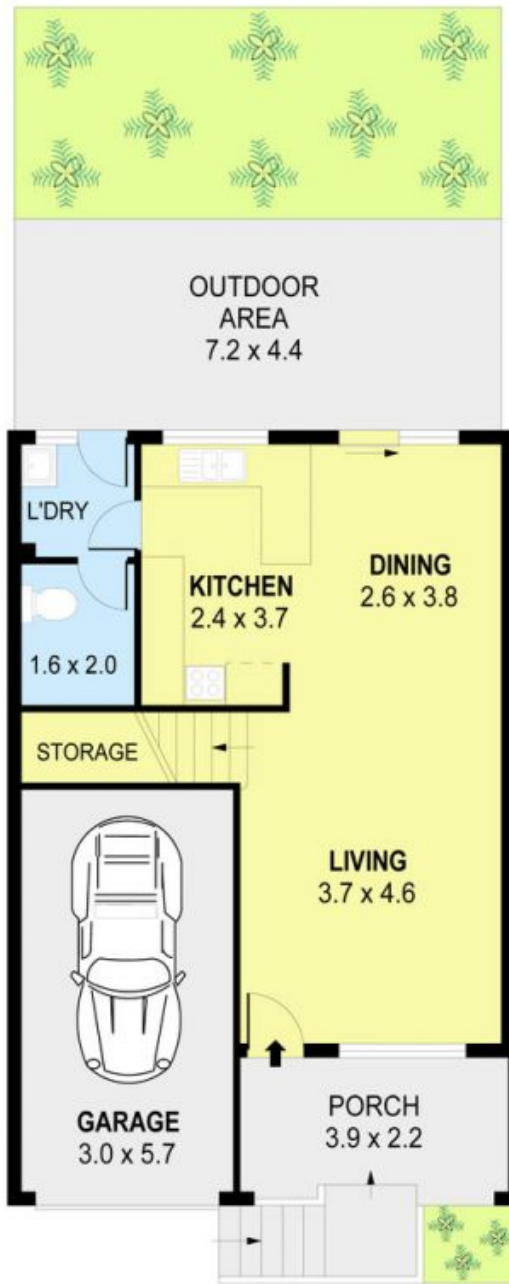
**Water Rates:** \$732.00/year (approx)

**Strata Rates:** \$1,620.00/year (approx)

**Danny**

0424 163 173  
**(LREA)**

**Mojana Džina Mojanovski**



GROUND LEVEL



UPPER LEVEL



PLANS SHOWN ONLY INDICATIVE OF LAYOUT. DIMENSIONS ARE APPROXIMATE.  
Ref. No: 47064

UNIT 10, 41-43 ROBERTSON STREET  
10/41-43 Robertson Street CONISTON, NSW

