

38/3-15 Belmore Street WOLLONGONG, NSW

 2  1  1

## Inner City Living

This impressive and stylish two level apartment is conveniently placed within walking distance to the heart of the CBD. The apartment would be equally suited to owner occupiers, or astute investors looking to capitalise on a prime location. Boasting a designer kitchen, open plan living and dining as well as balconies with amazing cityscape views. Additional features include:

- \* Over-sized two level inner city apartment
- \* Stone Benches in kitchen and bathroom
- \* Huge master suite, oversized bathroom & 2nd WC
- \* Pool facilities, on-site caretaker & secure basement parking
- \* Strata Levy \$1154.86 qtr
- \* Council Rates \$303.10 qtr
- \* Water Rates \$177.91 qtr
- \* Currently Tenanted at \$515 per week

**Council Rates:** \$1,212.00/year (approx)

**Water Rates:** \$711.00/year (approx)

**Strata Rates:** \$4,618.00/year (approx)

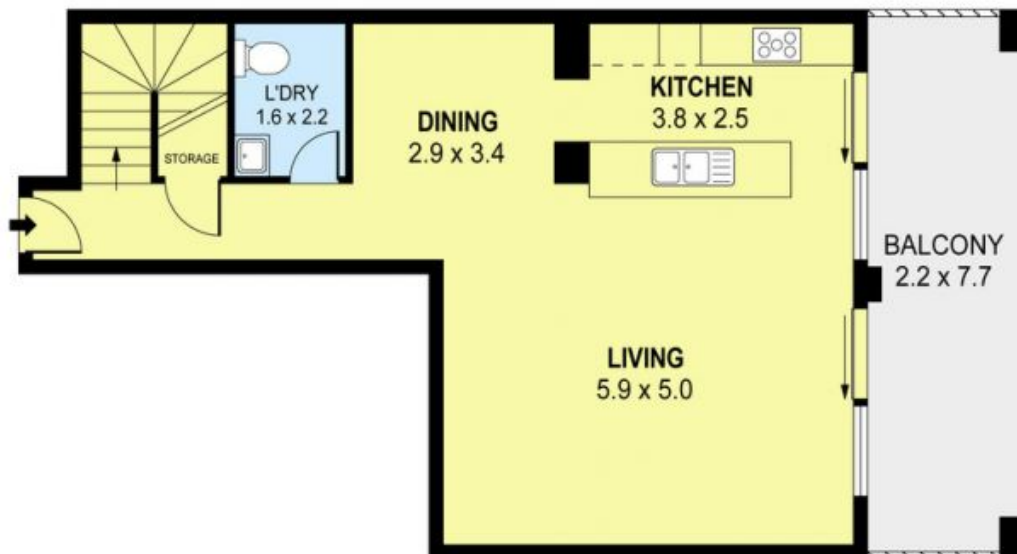
**Danny**

0424 163 173  
(LREA)

**Mojana Mojanovski**



UPPER LEVEL



LOWER LEVEL



PLANS SHOWN ONLY INDICATIVE OF LAYOUT. DIMENSIONS ARE APPROXIMATE.  
Ref. No: 21798

INT : 122m<sup>2</sup>  
EXT : 32m<sup>2</sup>

UNIT 38, 3-15 BELMORE STREET, WOLLONGONG, NSW

RE Management  
Group  
WOLLONGONG