



68 Ramah Avenue MOUNT PLEASANT, NSW



3



1



2

Original 1960's Design

Set amongst quality homes on a large 834.7sqm corner block with wide street frontages, this property provides the opportunity to renovate and take advantage of ocean and escarpment views, or the opportunity to redevelop.

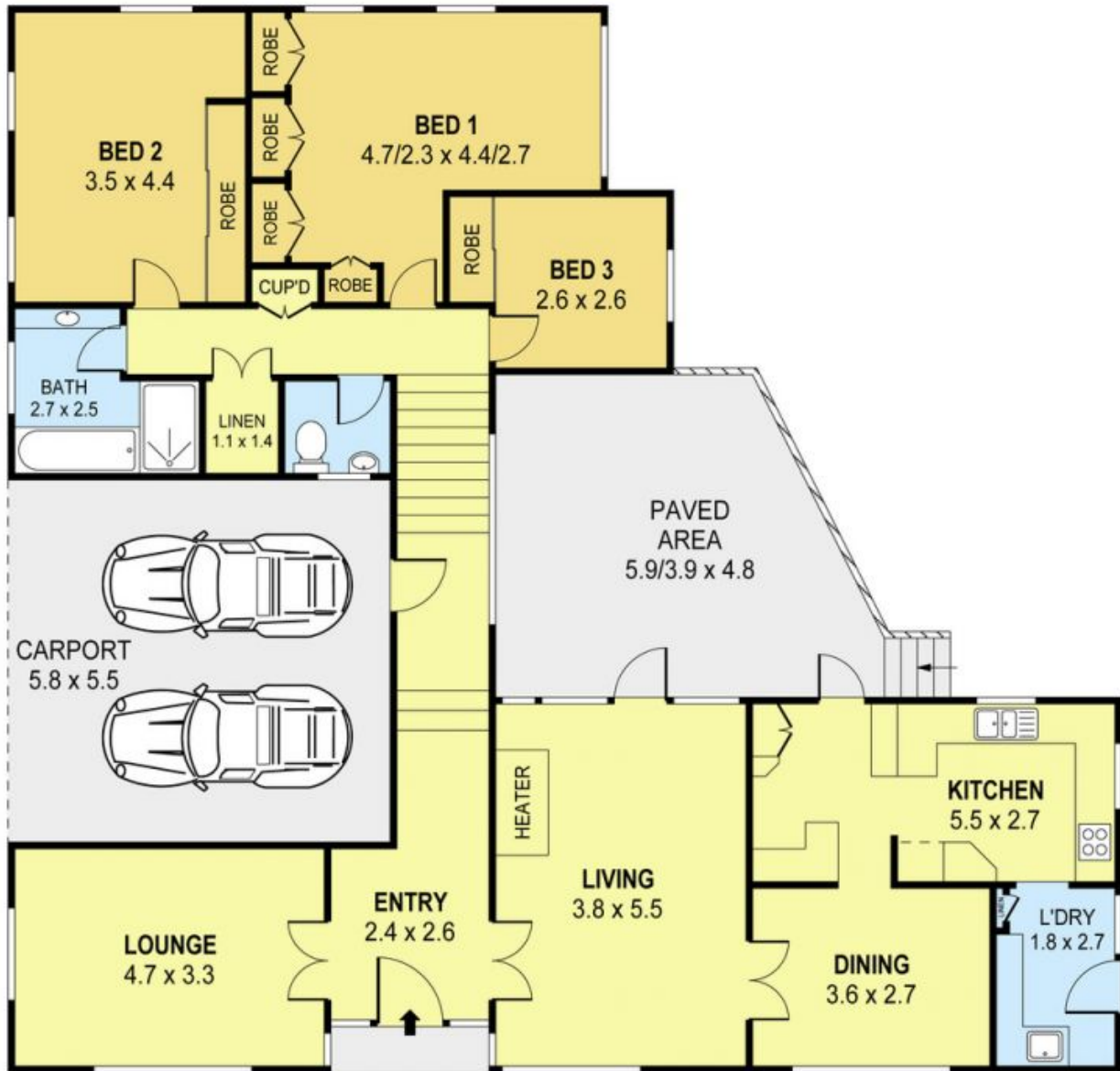
With all the hallmarks of a quality home of it's era and featuring the original 1960's design, this property offers high raked ceilings, large picture windows, hardwood timber floors, formal lounge and dining, living with fireplace, and a generous kitchen. The lower level has three bedrooms, bathroom, separate toilet and loads of storage.

Moments from Pleasant Heights School, Balgownie Village, parks, public transport and many other lifestyle conveniences.

Danny

0424 163 173
(LREA)

Mojanovski Diana Mojanovski



PLANS SHOWN ONLY INDICATIVE OF LAYOUT. DIMENSIONS ARE APPROXIMATE.
Ref. No: 43192

INT : 144m²
EXT : 32m²
CARPORT : 27m²

68 RAMAH AVENUE
68 Ramah Avenue

MOUNT PLEASANT, NSW

MOUNT PLEASANT
Group