



7/13-15 Soudan St FAIRY MEADOW, NSW



### Ideal Investment or First Home

This recently renovated one bedroom unit is ideally located moments from public transport, Fairy Meadow and Wollongong retail precincts, and Wollongong University.

Featuring one bedroom, bathroom, new kitchen, internal laundry and car space.

Located on the top level, this unit has a north facing balcony and is at the rear of a small complex.

Strata Levy \$552 qtr

Land Rates \$304 qtr

Water Rates \$178 qtr

**Council Rates:** \$1,215.00/year (approx)

**Water Rates:** \$712.00/year (approx)

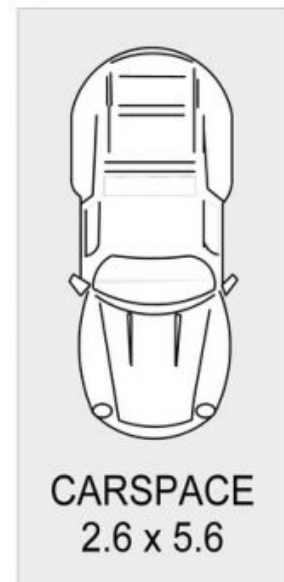
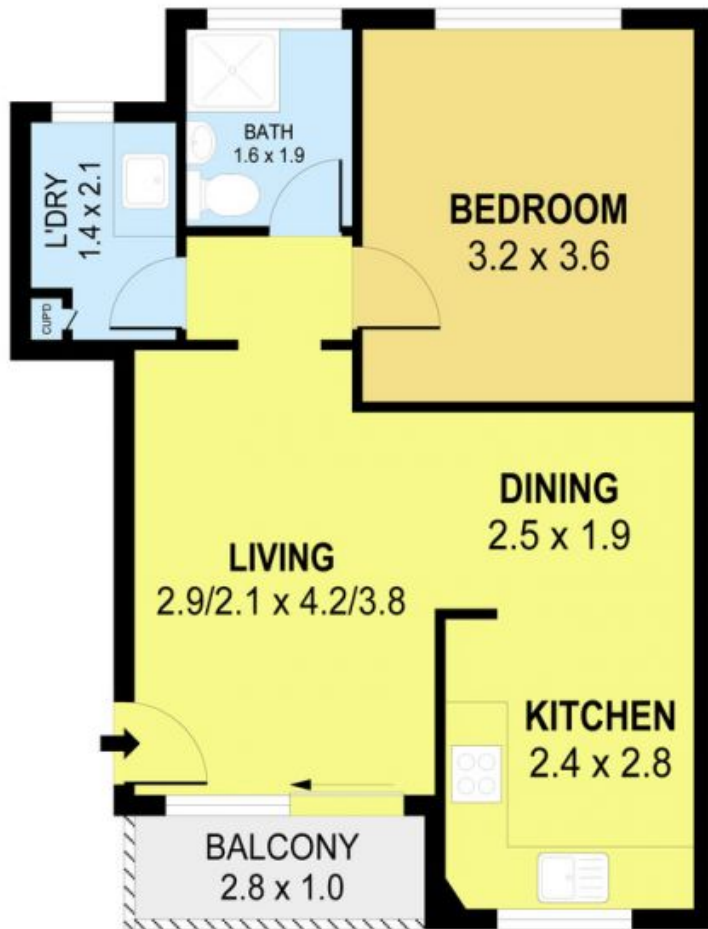
**Strata Rates:** \$2,206.00/year (approx)

**Danny**

**Mojanovski**

0424 163 173

**(LREA)**



CARSPACE  
2.6 x 5.6

DETACHED



PLANS SHOWN ONLY INDICATIVE OF LAYOUT. DIMENSIONS ARE APPROXIMATE.  
Ref. No. 41880

UNIT 7, 13-15 SOUDAN STREET  
7/13-15 Soudan St

FAIRY MEADOW, NSW

