



4/406 Princes Hwy CORRIMAL, NSW



3



2



2

## Lifestyle or Investment Opportunity

Peacefully set back from the road, this well presented townhouse is within minutes to shopping centres, schools, beaches and public transport. Offering an open plan living and dining area, a modern kitchen, timber floors, air conditioning, internal laundry, third toilet, garage, additional car space, and a private sunny courtyard. Upstairs boasts three bedrooms, main with ensuite and BIW, bathroom, and walk-in linen cupboard that can easily be converted to a study. Outstanding prospect for first home buyers or investors alike.

\*Strata Levy \$527 qtr

\*Land Rates \$329 qtr

\*Water Rates \$285 qtr

**Council Rates:** \$1,316.00/year (approx)

**Water Rates:** \$1,139.00/year (approx)

**Strata Rates:** \$2,108.00/year (approx)

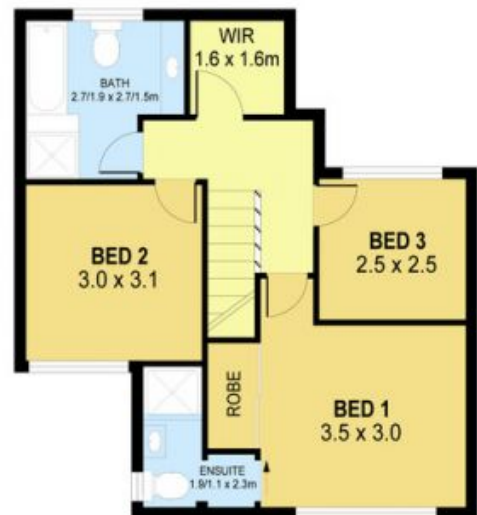
**Danny**

0424 163 173  
(LREA)

**Mojanovski Diana Mojanovski**



GROUND LEVEL



UPPER LEVEL



PLANS SHOWN ONLY INDICATIVE OF LAYOUT. DIMENSIONS ARE APPROXIMATE.  
Ref. No. 40495

UNIT 4/406 PRINCES HIGHWAY CORRIMAL, NSW

