



3/306 Crown St WOLLONGONG, NSW

Commercial Office Suite

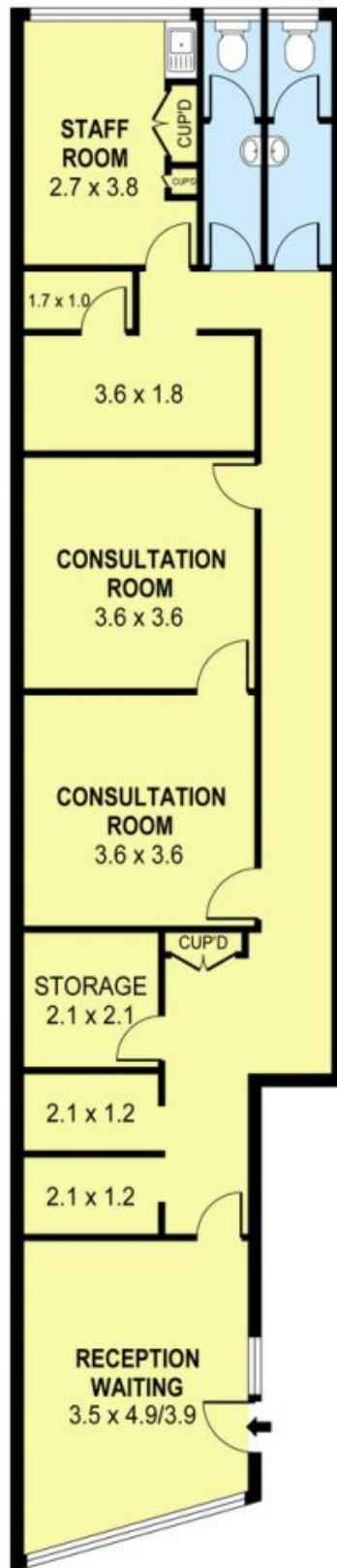
Ideally located in the Wollongong CBD, this property is being offered for the first time in over 30 years.

- Close proximity to Wollongong Hospital
- Opposite Wollongong Train Station
- Currently used as Chiropractic Practice
- Large Reception Area
- Multiple Consulting Rooms
- Storage Area
- Lunch Room/Kitchen
- Male & Female amenities
- Includes Two Basement Car Parking Spaces
- Currently tenanted on a monthly basis until November 2015
- Zoned B3

Danny

Mojanovski

0424 163 173
(LREA)



0 1 2 3 4 5 SCALE (METRES)

PLANS SHOWN ONLY INDICATIVE OF LAYOUT. DIMENSIONS ARE APPROXIMATE.
Ref. No: 34079

INT : 103m²

3/396 Crown St SUITE 3, 396 CROWN STREET WOLLONGONG, NSW

Management
WOLLONGONG