



30 Balfour St FAIRY MEADOW, NSW

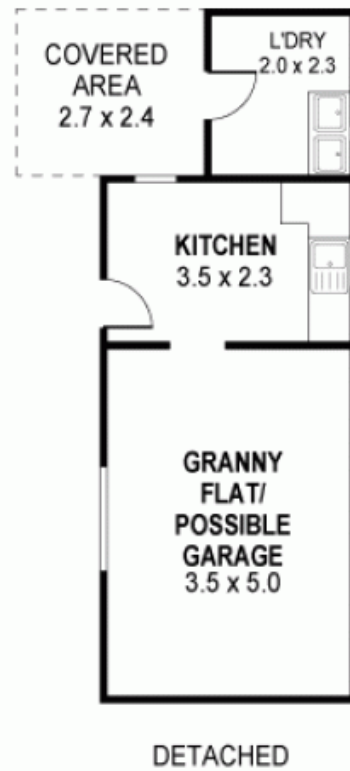
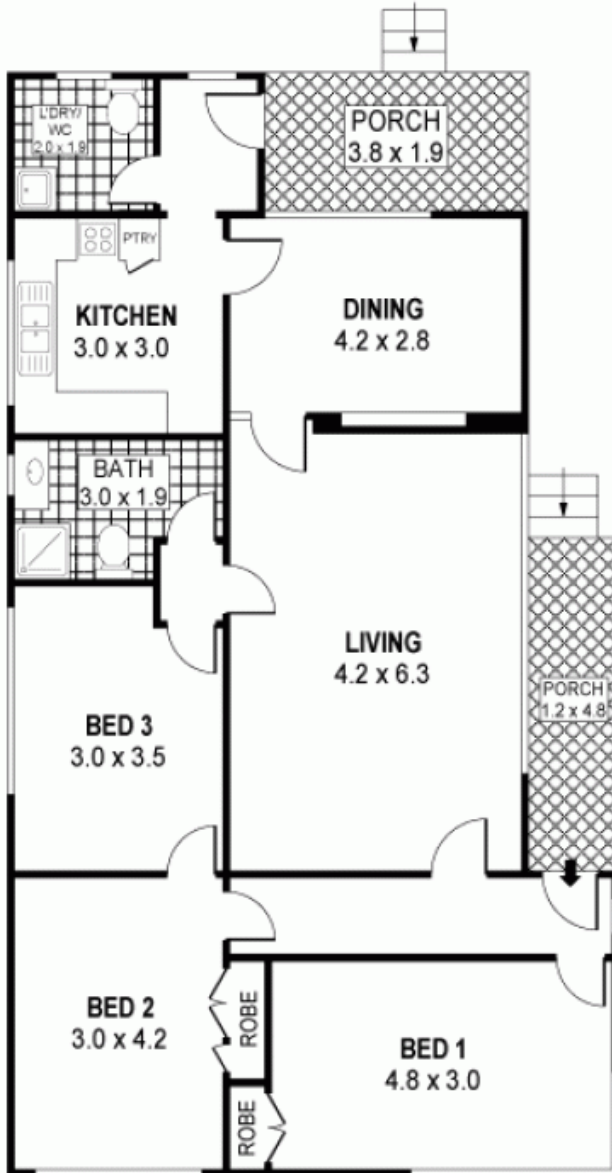


GREAT FAMILY HOME

This well maintained three bedroom property is set on a level block close to schools, shops, transport and parks. This home offers lounge and separate dining as well as a lock up garage that is currently used as a self-contained granny flat. Move in right away, or ideal as an investment in this sought after area.

Diana Mojanovski Danny Mojanovski

0424 163 173
(LREA)



PLANS SHOWN ONLY INDICATIVE OF LAYOUT. DIMENSIONS ARE APPROXIMATE.
 Ref No. 21456

INT : 112m²
 EXT : 10m²
 OUTBUILDING : 31m²

30 BALFOUR STREET

FAIRY MEADOW, NSW

