

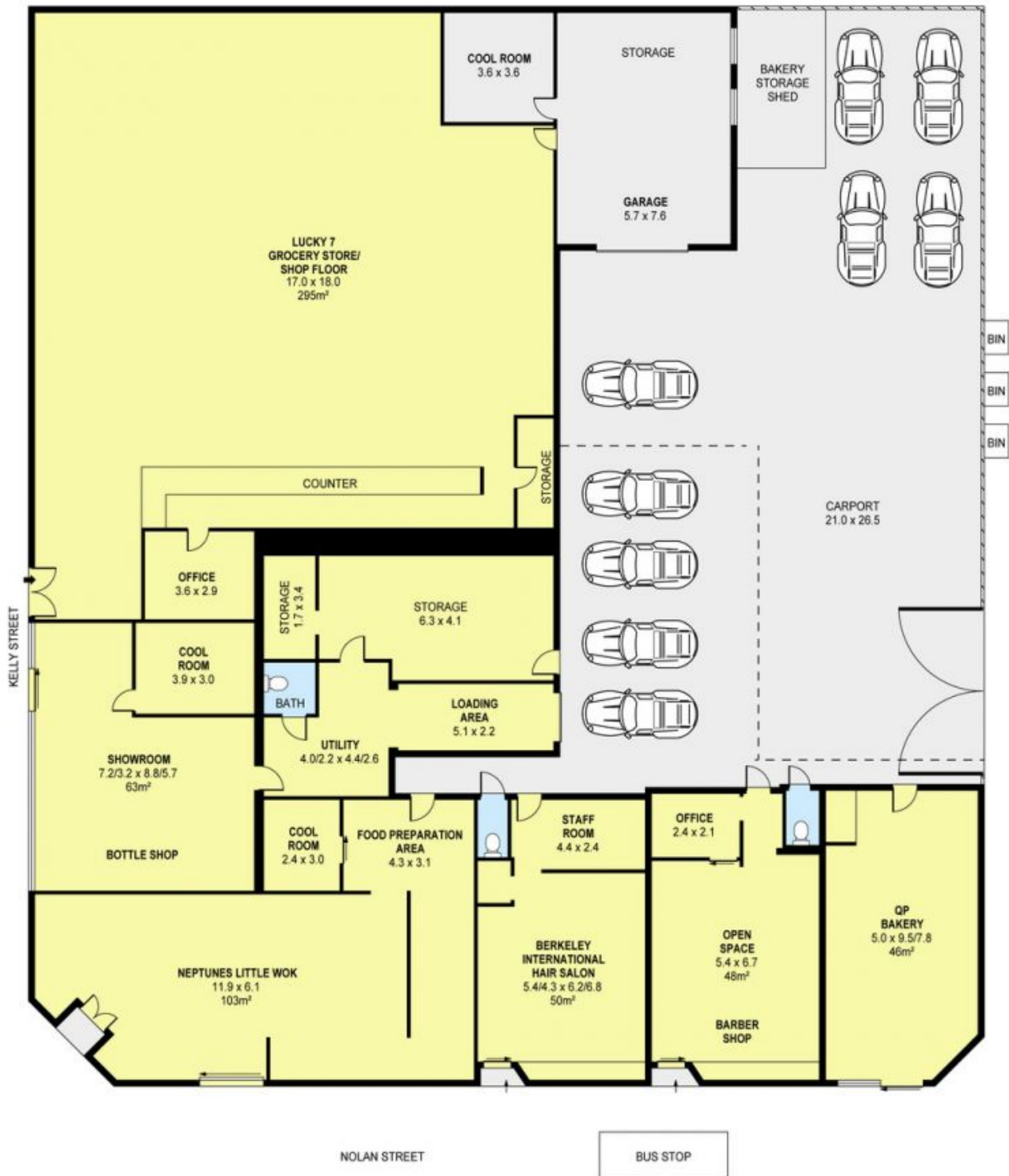


Shop 1a, 2-4 Kelly Street BERKELEY, NSW

Retail Space!

- * Approx 145 sqm of floor area
- * Previously occupied as a super market
- * Set among other retail shops
- * Off street parking
- * Excellent opportunity
- * Would suit multiple types of businesses

Daniel Mojanovski Danny Mojanovski
0424 163 173
(LREA)



SCALE (METRES)

PLANS SHOWN ONLY INDICATIVE OF LAYOUT. DIMENSIONS ARE APPROXIMATE.
Ref No. 47809



2-4 KELLY STREET
Shop 1a, 2-4 Kelly Street

BERKELEY, NSW

