

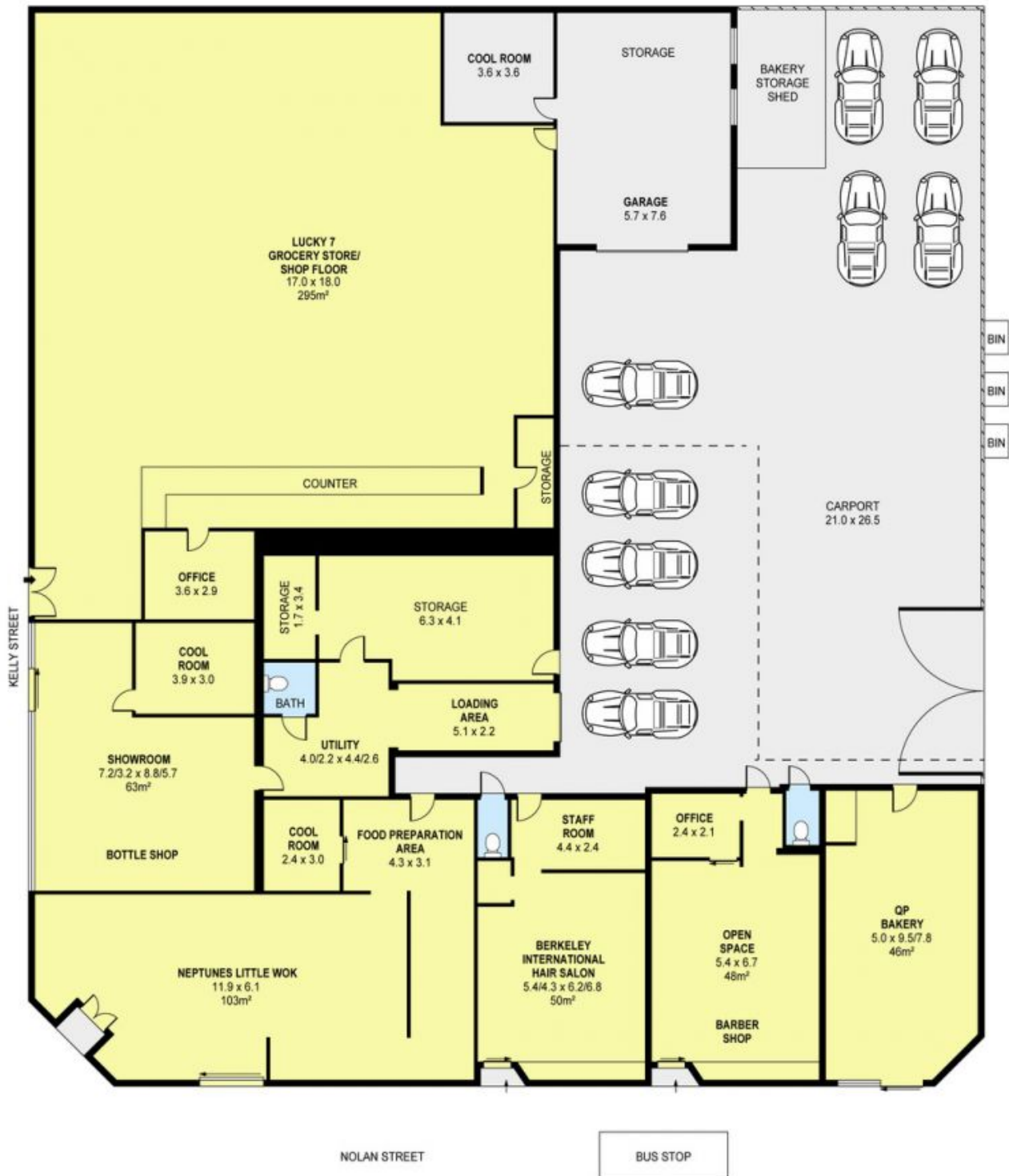


Shop 1, 2-4 Kelly Street BERKELEY, NSW

Retail Space!

- * Approx 295 sqm of floor area
- * Previously occupied as a super market
- * Set among other retail shops
- * Off street parking
- * Excellent opportunity
- * Would suit many types of businesses

Daniel Mojanovski Danny Mojanovski
0424 163 173
(LREA)



2-4 KELLY STREET
Shop 1, 2-4 Kelly Street

BERKELEY, NSW

